

Tomorrow's **Warmth**
Today's Innovation





WHO WE ARE

"Termica solar is an Egyptian factory for solar water heaters in Egypt, established to meet the needs of the Egyptian market and increase export opportunities. In a short period, it has achieved a local component exceeding %70 with an ambitious plan to reach %90 by the end of 2025."

"With an experience exceeding 10 years, our team specializes in the installation and maintenance of all types of solar water heaters, managing a portfolio of over 3,000 solar heaters. This extensive experience has been instrumental in identifying potential product issues, selecting optimal materials for manufacturing, and utilizing machinery that contributes to achieving the highest quality and extending the lifespan of the heaters."



VISSION

"To become the largest factory in the Middle East in terms of exports, efficiency, and price competitiveness."



MISSION

"Meeting local demand with a product that is no less efficient than the European product at prices lower by %20 to %30, and achieving environmental sustainability by reducing CO2 emissions."



STRATEGY

"Continuously providing diverse and advanced products in the field of solar heating."



OBJECTIVE

"Changing the customer's perception of local products in terms of quality, efficiency, and value for money."



APPROACH

To compete in quality with compatitive price.



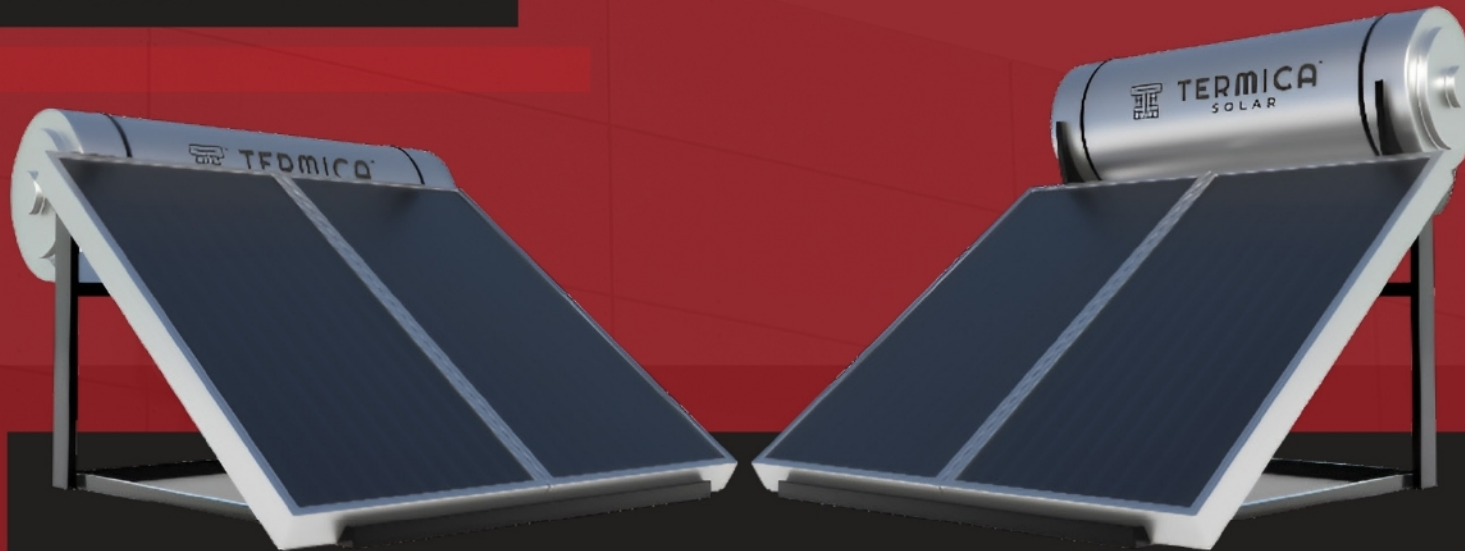
VALUE

"Availability of spare parts, maintenance, and after-sales service, eliminating the need to wait during import-related obstacles."










SOLAR WATER HEATER



ADVANTAGES :

-  "Hot water at no less than 55 degrees Celsius throughout the day, all year round."
-  "Modern design adds elegance to your home."
-  "Savings on electricity and gas bills."
-  "Up to a 20year lifespan."
-  Complete avoidance of electric and gas heater risks





TANKS



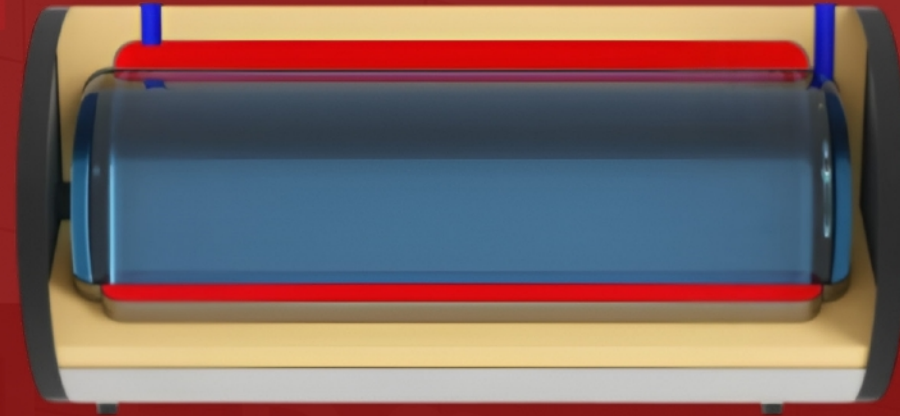
TERMICA™
SOLAR








Tomorrow's Warmth
Today's Innovation



SS DOUBLE JACKET

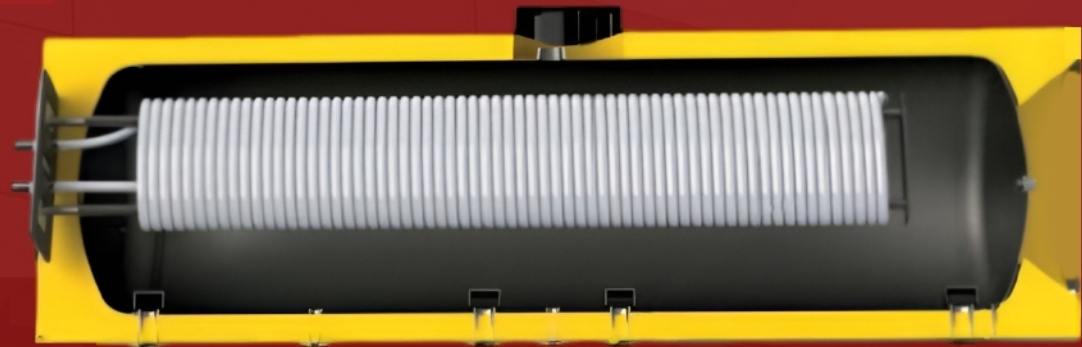









-  300 , 200 Lt closed circuit boiler production with an attractive design .
-  Resistance to hard water with Magnesium anode rod .
-  Health and hygienic water with ss foodgrade .
-  40 mm insulation with injected rigid polyurethane .
-  Enhances the aesthetic appearance of the facility due to its distinctive and unique design.



SS COIL

TANK



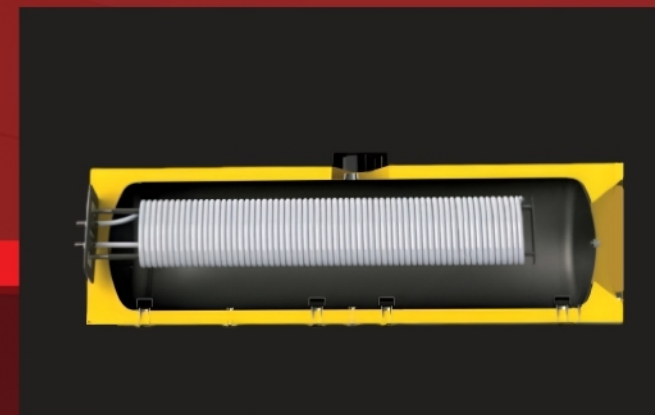
-  Removable 316 L stainless steel exchanger.
-  specifically designed for thermosiphon units.
-  300 , 200 Lt closed circuit boiler production with an attractive design .
-  Resistance to hard water and no need magnesium rod.
-  Health and hygienic water with ss foodgrade.
-  40 mm insulation with injected rigid polyurethane.
-  Enhances the aesthetic appearance of the facility due to its distinctive and unique design.



SS COIL TANK

TECHNICAL SPECIFICATIONS

Model	Sct 200	Sct 300
Installation	Horizontal	Horizontal
Volume	200 Litre	300 Litre
Diameter (mm)	560	560
length	1500	1800
pressure	Primary 3 bar / Secondary 9 bar	
Inner Tank	Gulvanized steel 2.5 mm	
Coil	SS 316 L	
Outer tank	colour Electrostatic Gulvanized steel	
Insullation	injected rigid polyurrthane Thickness 40 mm Desnisty 42 kg/m3	
Tank protection	optional	





**LUMINA
SERIES**

COLLECTOR



TERMICA™
SOLAR



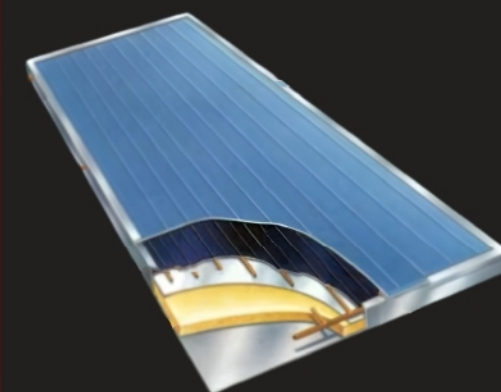
**Tomorrow's Warmth
Today's Innovation**

COLLECTOR

LUMINA SERIES

TECHNICAL SPECIFICATIONS

Model	Lumina 2000	Lumina 2500
Collector Type	Flat plate Solar collector	Flat plate Solar collector
Gross Area	2m ²	2.55 m ²
Daimensions	80*1000*2000 mm	81*2170*1175 mm
weight	38 KG	42KG
Absorption	Blue Titanuim	Blue Titanuim
Welding Type	Ulturasonic welding	ultruasonic welding
case material	Aluminuim case	Aluminuim case
pipe material	copper pipe	copper pipe
Head pipe	Φ 22 mm	Φ 18mm
Raiser pipe	Φ 8 mm	Φ 8 mm
Absorption rate	95%	
Glass Material	3.2 low iron tempered glass	
insullation	50 mm thickness glass wool	
Connector	4/3 inch outer thread brass connectors 4pcs	
Max operating pressure	9 bar	
packing	full packing carton	





ACCESSORIES

 **TERMICA**
SOLAR



Tomorrow's Warmth
Today's Innovation

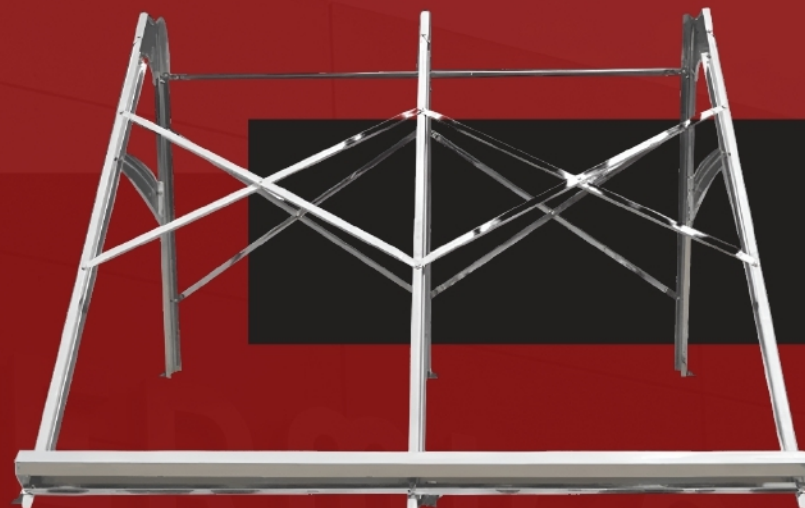





STEEL STRUCTURE

ACCESSORIES



ADVANTAGES :



-  Structure made with galvanized steel angles.
-  Designed specifically to withstand weathering, salinity, and rust to provide a long lifespan.
-  Designed for installation on both flat and pitched surfaces.



SAFETY PARTS



3 bar safety valve male

"2/1 inch outer thread
YA15- model - AKE
brand (heavy model, larger release)"



Thermosiphon check valve

"L shape brass connector
4/3 inch inner thread - 4/3 inch outer thread Flat collector connect to flexible pipe"



Thermostatic valve 8 bar

2/1 inch



Thermal relief valve

2/1 inch - 90 C - 8 bar AKE brand



silicon seal ring

"4/3 inch model, suit to 2/1 inch inner thread welding pipe
Silicone material"



ACCESSORIES

SAFETY PARTS



**decorate
ring**

"4/3 inch model, suit to 2/1 inch inner thread welding pipe TPE plastic material"



**Magnisium
rod**

Diameter 20mm, length 600mm & 800 mm. Brass connector: 4/3 inch outer thread



**Electrical heater
incoloy +800
thermostat**

4/1 1 inch connector, SS316 material, 3KW model, thermostat range 80-°C30°C



**flexible
stainless hose**

"DN4/3 - 16 inch pipe ID16-mm, OD - 20mm SS316L material, thickness 0.25mm Offer unit per meter"



**Flexible pipe
connection set**

"4/3 inch model, Brass connector + SS304 clip + silicone washer Offer unit per set"

ACCESSORIES

SAFETY PARTS



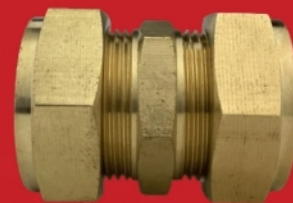
Arma flex insulation

"EPDM material, thickness 18mm, Centre hole Dia. 22mm, suit to 4/3 inch flexible pipe
Offer unit PCS (1.8 meter/PCS)"



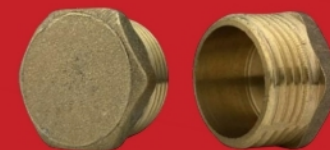
PVC tap

PVC material, black color Offer unit Reel - around 30 meters



"collectors coupling - suit to outer thread pipe"

4/3 inch two end inner thread, Brass material with seal ring



"collectors cap ending - suit to outer thread pipe"

4/3 inch inner thread stopper, brass material with seal ring



pressure reducer valve

Size: 2/1 inch model (DN15)
Double inner thread
Max. pressure: PN16



THANKS





SS DOUBLE JACKET

TECHNICAL SPECIFICATIONS

Model	SDJ 200	SDJ 300
Installation	Horizontal	Horizontal
Volume	200 Litre	300 Litre
Diameter (mm)	560	560
length	1500	1800
pressure	Primary 3 bar / Secondary 9 bar	
Inner Tank	SS 1.5	
Jacket	SS 1.2 up to 1.5 mm	
Outer tank	colour Electrostatic Gulvanized steel	
Insulation	injected rigid polyurethane Thickness 40 mm Density 42 kg/m ³	
Tank protection	Magnesium Rod	
Reboiler material	SS 304 L	

